

Pressures on biodiversity in Irish waters

Location snapshot



Nested approach

- Basin: Northeast Atlantic,
- Regional: Irish waters/Celtic Sea
- Local sites: Tralee Bay, Dunmore East



Habitats

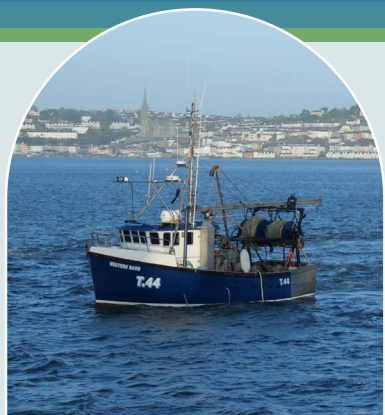
- Deep offshore continental shelves and canyons, sandy and rocky seashores, kelp forests and salt-marshes



Key species

- Commercially important fish
- Elasmobranchs
- Marine mammals

Key sites in Ireland



Stakeholder context

Fishers, tourism and energy sectors, research, aquaculture, NGOs, local authorities, state agencies, planners.

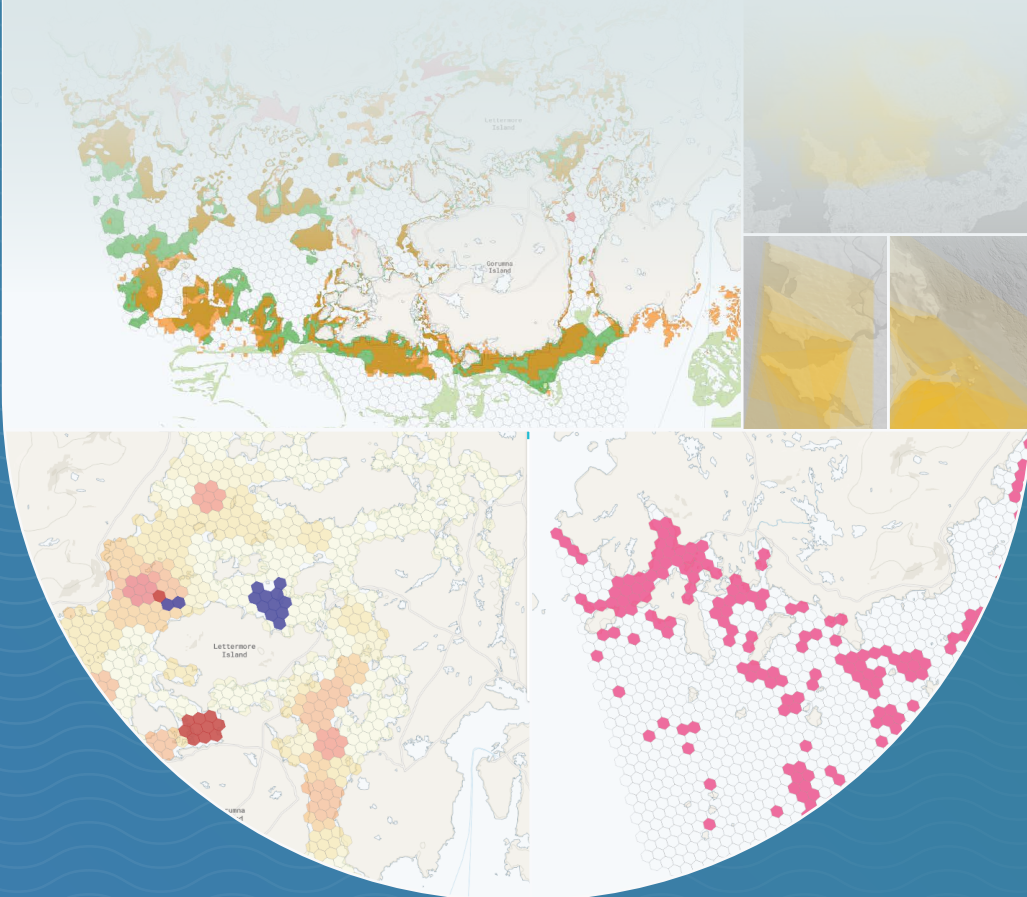


Main challenges

1. Multisectoral blue economy
2. Offshore renewable energy development
3. Need for a coherent, connected network of MPAs
4. Need for more collaborative decision-making



The BioProtect solution in action



What BioProtect is doing here

- Ireland is the pilot for participatory marine planning via BioProtect's co-developed tools



Key project activities

- Systematic conservation planning at basin, regional, and local levels
- Stakeholder engagement through workshops and surveys
- Public participatory mapping (PPGIS) to integrate local knowledge into planning
- Ecosystem modelling to test management and climate change scenarios

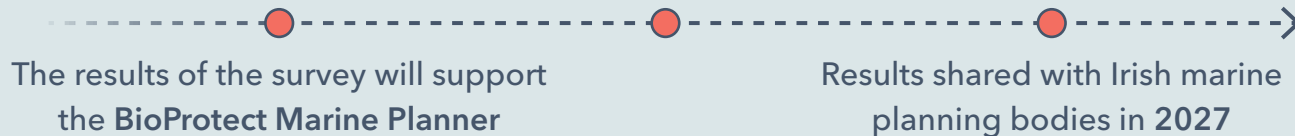


Expected impact

- Support community-informed marine conservation
- Help design adaptive, equitable management plans
- Inform national MPA expansion strategies

What's next?

Model outputs by 2026



Learn more

[bioprotect-project.eu/
demonstration-sites/
ireland](https://bioprotect-project.eu/demonstration-sites/ireland)

